

Discovery CENTERS™

- Affordable
- Easy to install
- Commercially compliant



Early Childhood Activity Centers
Promoting Best Practices and Bringing Learning Outdoors

- Affordable
- Easy to install
- Commercially compliant

Quality play equipment helps make a positive impression with parents.



Discovery Centers

help meet best practices and licensing requirements in **early childhood program standards**



Gross Motor Development

A variety of opportunities for physical activity and exploration through climbing, jumping, and large motor development.



Bringing Learning Outdoors

Develop skills and concepts of math, science, and language outdoors in fun and creative ways.



Fine Motor Development

The Gear Panel and other small motor activities help develop strength, eye-hand coordination, and dexterity.



Discovery Center 5

DC-5XLG



Music & Movement

Multiple types of music and auditory experiences encourage movement, creativity, and self-expression.



Dramatic Play

Open-ended play areas encourage children to think creatively, use their imaginations, and socialize with friends.



Multisensory Experiences

Sensory rich play experiences provide auditory, visual, or tactile feedback and help meet individual learning needs.

Maximum Play Value

and a variety of developmental and educational activities that encourage children to learn, grow, and lead healthy lifestyles.

Superior detail and variety for hours of activity and increased teacher interaction.

TOUCHMATH®
WWW.TOUCHMATH.COM 1-800-866-9191

All Discovery Centers exclusively feature a TouchMath® learning panel and curriculum for bringing learning outdoors. TouchMath is an award-winning multisensory math curriculum.

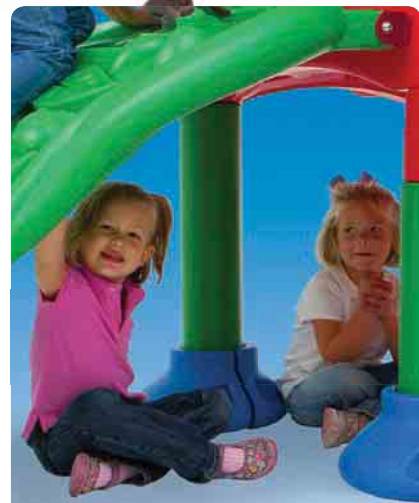


WARNING – Installation over a hard surface such as concrete, asphalt, or packed earth may result in serious injury from falls.



Creative Arts

The Bench Seat provides raised graphics that bring creative arts and literacy development outdoors.



Semiprivate Areas

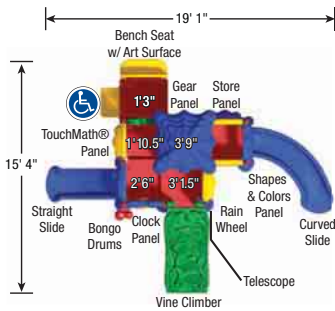
Under deck areas provide cozy spots to play independently or with peers.

Built To Last

Made from durable, commercial playground materials including heavy duty galvanized steel uprights. See page 8 for mounting kits.



DISCOVERY CENTER 5



DISCOVERY CENTER 5 DC-5XLG

Ages: 2-5 years

Deck Height: 1' 3", 1' 10.5", 2' 6", 3' 1.5", 3' 9"

Activities: 5 ground level, 7 elevated

Capacity: 20-25 kids

Fall Ht: 3' 9"

Unit Weight: 1,140 lbs.

Dimensions: 15' 4" w x 19' 1" l x 11' h

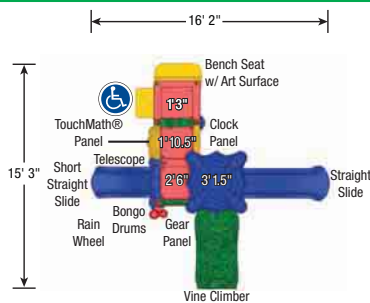
ASTM Use Zone: 28' x 31'

Meets or exceeds ADA guidelines for accessibility. All activities from Unit 4 **PLUS** Store Panel, Shapes & Colors Panel, and a longer Curved Slide for added play value.

MOUNTING KITS (Required) Ground Spike w/ 8" Footer for EWF Surfacing **02-08-0209**
 Anchor Bolt w/ 2" Footer for Resilient Surfacing **02-08-0210**
 Add-on Inground Kit **02-08-0211**



DISCOVERY CENTER 4



DISCOVERY CENTER 4 DC-4LG

Ages: 2-5 years

Deck Height: 1' 3", 1' 10.5", 2' 6", 3' 1.5"

Activities: 4 ground level, 6 elevated

Capacity: 15-20 kids

Fall Ht: 3' 1.5"

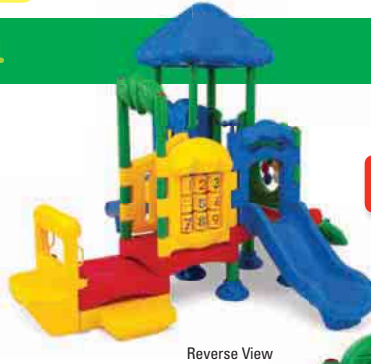
Unit Weight: 875 lbs.

Dimensions: 15' 3" w x 16' 2" l x 11' h

ASTM Use Zone: 27' x 28'

Meets or exceeds ADA guidelines for accessibility. Most activities from Unit 2 **PLUS** Bench Seat and second Slide

MOUNTING KITS (Required) Ground Spike w/ 8" Footer for EWF Surfacing **02-08-0206**
 Anchor Bolt w/ 2" Footer for Resilient Surfacing **02-08-0207**
 Add-on Inground Kit **02-08-0208**



TOUCHMATH®
WWW.TOUCHMATH.COM 1-800-888-9191

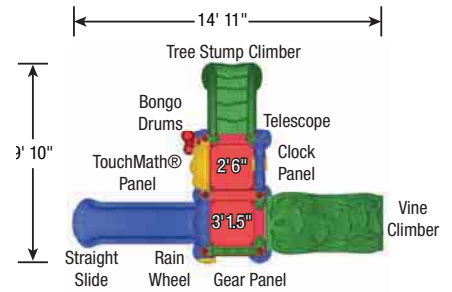
All Discovery Centers exclusively feature a TouchMath® learning panel and curriculum for bringing learning outdoors. TouchMath is an award-winning multisensory math curriculum.



DC-2MDR w/ Roof
Reverse View

Choose optional roof package for sun safety and comfort!

DISCOVERY CENTER 2



DISCOVERY CENTER 2

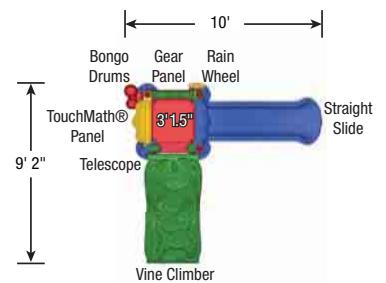
- Ages:** 2-5 years
 - Deck Height:** 2' 6", 3' 1.5"
 - Activities:** 2 ground level, 7 elevated
 - Capacity:** 10-15 kids
 - Fall Ht:** 3' 1.5"
 - Unit Weight:** 600 lbs. w/o Roof
688 lbs. w/ Roof
 - Dimensions:** 9' 10" w x 14' 11" l x 6' 8" h w/o roof
9' 10" w x 14' 11" l x 11" h w/ roof
 - ASTM Use Zone:** 22' x 27'
- All activities from Unit 1 PLUS Clock Panel and Tree Stump Climber*
- | | | |
|---------------------------------|--|------------|
| MOUNTING KITS (Required) | Ground Spike w/ 8" Footer for EWF Surfacing | 02-08-0203 |
| | Anchor Bolt w/ 2" Footer for Resilient Surfacing | 02-08-0204 |
| | Add-on Inground Kit | 02-08-0205 |



DC-2MD w/o Roof

DISCOVERY CENTER 1

Choose optional roof package for sun safety and comfort!



DISCOVERY CENTER 1

- Ages:** 2-5 years
 - Deck Height:** 3' 1.5"
 - Activities:** 2 ground level, 5 elevated
 - Capacity:** 5-10 kids
 - Fall Ht:** 3' 1.5"
 - Unit Weight:** 415 lbs. w/o Roof
495 lbs. w/ Roof
 - Dimensions:** 9' 2" w x 10' l x 6' 8" h w/o roof
9' 2" w x 10' l x 11" h w/ roof
 - ASTM Use Zone:** 22' x 22'
- | | | |
|---------------------------------|--|------------|
| MOUNTING KITS (Required) | Ground Spike w/ 8" Footer for EWF Surfacing | 02-08-0200 |
| | Anchor Bolt w/ 2" Footer for Resilient Surfacing | 02-08-0201 |
| | Add-on Inground Kit | 02-08-0202 |



DC-1SMR w/ Roof
Reverse View

DC-1SM w/o Roof

WARNING – Installation over a hard surface such as concrete, asphalt, or packed earth may result in serious injury from falls.

FREESTANDING EQUIPMENT

Add **Freestanding Equipment** to complete the play environment. Ground level events promote inclusion, help traffic flow, provide additional play opportunities, and incorporate motion elements through swinging and rocking for sensory stimulation.



2-Rider Spring See Saw 02-07-0055

Encourage social interaction with the Spring See Saw designed for two riders.

- Powder coated blue frame with red seats
- In-ground mounting kit also available: #02-07-0104 (sold separately)
- Anchor bolts included for surface mounting
- Use zone: 20' x 13"



Truck Spring Rider 02-07-0054



Horse Spring Rider 02-07-0053

Spring riders are an excellent way to add excitement and imaginative play to a new or existing playground.

- HDPE body and seat
- Heavy-duty surface mount steel spring
- In-ground mounting kit also available: #02-07-0081 (sold separately)
- Anchor bolts included for mounting
- Use zone: 15' x 13'

Strap Seat 02-07-0100



Tot Seat 02-07-0101



Swing Seat & Hardware Packages

Packages include (1) seat, (2) hangers, (2) chains and (4) S-hooks

Model	Description
02-07-0100	Commercial Strap Seat Package
02-07-0101	Commercial Tot Seat Package
55-451	Commercial Strap Seat (Seat Only)
55-451RB	Commercial Tot Seat (Seat Only)

Call for information about Add-A-Bay Swings

Bipod Swings

- 8' high single bay or double bay frames
- 2-3/8" galvanized pipe top rail and 2-3/8" diameter legs
- Commercial strap seats or tot seats
- Powder coated blue (BLU) or green (GRN) yoke connectors
- Seats, swing hangers, chain & factory-closed S-hooks included with swing sets

Green Model	Blue Model	Description
PBP-8-1S-GRN	PBP-8-1S-BLU	8' Single Bay with Strap Seats
PBP-8-2S-GRN	PBP-8-2S-BLU	8' Double Bay with Strap Seats
PBP-8-1C-GRN	PBP-8-1C-BLU	8' Single Bay with Tot Seats
PBP-8-2C-GRN	PBP-8-2C-BLU	8' Double Bay with Tot Seats
PBP-8-2SC-GRN	PBP-8-2SC-BLU	8' Double Bay with (2) Strap & (2) Tot Seats

Bipod Swings PBP-8-2SC-GRN





Early Childhood Horizontal Ladder PJHLAD

- Increase the physical fitness potential of your playground
- Research shows that developmentally appropriate, lower overhead climbing challenges provide many benefits for young children
- Improves hand strength and upper body development
- 2-3/8" O.D. galvanized zinc tubing
- Powder coated steel with cast aluminum corner connectors
- The Tire Boost Package #02-01-0025 adds height assistance and prevents surfacing displacement (sold separately)
- Use zone: 18' x 14'



All equipment shown is appropriate for children ages 2-5



Freestanding Crawl Tunnel 02-07-0057

- Playful portholes provide supervision and a brighter interior
- Provides semiprivate areas on the playground that promotes social and imaginative play
- Includes surface mount footers and ground spikes
- Assembly required
- In-ground mount kit also available: # 02-05-0079 (sold separately)
- Available in Green (GRN) or Red (RED)
- Use zone: 16' x 15'



Zig-Zag Balance Beam Z-BAL8

- Unique, nature-themed punched steel design
- High quality thermoplastic coating for traction and durability resists impacts and is UV stable
- Mounts in-ground on 2-3/8" support posts
- 4" wide x 8" long
- Use zone: 20' x 13'

WARNING – Installation over a hard surface such as concrete, asphalt, or packed earth may result in serious injury from falls.

4' Freestanding Slide SLIDE-P



4' Freestanding Slide

- The 4' high slide adds the most popular activity to any play space
- 3-1/2" powder coated steel uprights, perforated, coated steel stairs
- Heavy-duty rotomolded straight slide with matching entrance
- Colors as shown
- Assembly and in-ground installation is required, all needed components included
- 3' 6" wide x 11' 6" long x 7' 6" high
- Use zone: 24' x 16'



Visit us online for downloadables, research, product details, warranty, and more!

Install Yourself & Save!

MOUNTING KITS

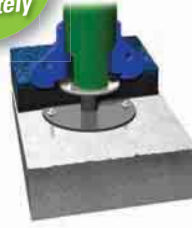
Anchoring using a mounting kit is required for structure to be compliant with commercial playground standards. Prior to selecting a mounting kit, identify which surfacing type is most appropriate for the facility. Use the Ground Spike with 8" Footer for Engineered Wood Fiber or the Anchor Bolt with 2" Footer for Resilient Surfacing (i.e. Rubber Tiles, Poured-In-Place, and Bonded Rubber Surfacing). These kits are surface mount options. Consider an Add-on Inground Kit that adapts either kit for inground installation and is appropriate for laying Wood Fiber on sandy or loamy soil or when installing Tiles or Poured-In-Place over non-concrete base.

EZ INSTALL
Ground Spikes

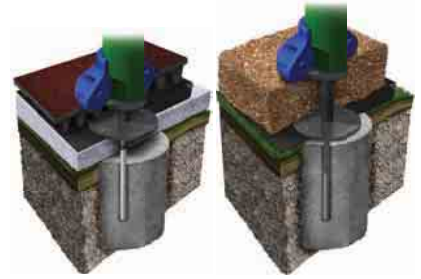


Ground Spike with 8" Footer for EWF Surfacing

Mounting Kits sold separately



Anchor Bolt with 2" Footer for Resilient Surfacing (i.e. Tiles, PIP, Bonded)



Add-on Inground Kit Makes either kit inground

SAFETY SURFACING



Green Rubber Tiles

- Allows for individual tile replacement
- Meets ADA requirements and impact attenuation for 72" fall height
- Beveled edges, corners and glue also available
- Call for a custom quote



Engineered Wood Fiber

- Engineered, non-toxic, crushed wood fiber
- A "knitted" or compacted layer supports wheelchairs
- Easily installed by volunteer labor
- Most economical choice, requires more maintenance and topping off to remain compliant with standards and warranty
- Call for a custom quote



Border Timbers

- Retain loose fill safety surfacing
- Easy to install
- Includes one spike each



Model Description

- 02-07-0075-BLK 4' x 12" x 3" Border Timbers
- 02-07-0076-BLK 4' x 8" x 3-1/2" Border Timbers
- 02-07-0078-BLK Access Ramp



Curb/Ramp Adapter

- Required for use with Access Ramp when using 12" high Border Timbers
- Must use a left and right hand adapter
- Also used for transition between 8" & 12" curbs

Model Description

- 02-07-0124 Left Hand Adapter
- 02-07-0125 Right Hand Adapter



Go online for sample layouts and information about designing your space to meet use zone requirements.



Poured-in-Place

- Attractive, resilient, seamless two-layer surface that is slip-resistant and accessible
- Available in a variety of colors
- Installation by certified installers
- Higher initial investment with less maintenance over the life of the product
- Call for a custom quote

QUICK SHIP SITE AMENITIES



Standard Size Bench

- Model 940 – 6' or 8' portable bench
- Powder coated 2-3/8" O.D. all MIG welded pipe

Child's Picnic Table

- Model 158 – 4' or 6' portable preschool table with rounded corners
- 12" high seating, 20" high table
- Powder coated 1-5/8" O.D. all MIG welded pipe



Child's Bench

- Model 940 – 3' portable bench
- 12" high seating
- Powder coated 1-5/8" O.D. all MIG welded pipe

Standard Size Table

- Model 238 – 6' or 8' portable table
- Powder coated 2-3/8" O.D. all MIG welded pipe

SHIPS IN



Diamond Pattern



Thermoplastic Color Coating Options



Blue



Green

ultraPLAY®

A PLAYCORE Company

1675 Locust Street, Red Bud, IL 62278

Visit us online at uplaytoday.com

or call **800.458.5872**

